

- For operation of air control dampers in HVAC system
- Torque: 8Nm
- Nominal voltage: AC/DC 24V
- Control: Open/Close (not made for 3-point applications)



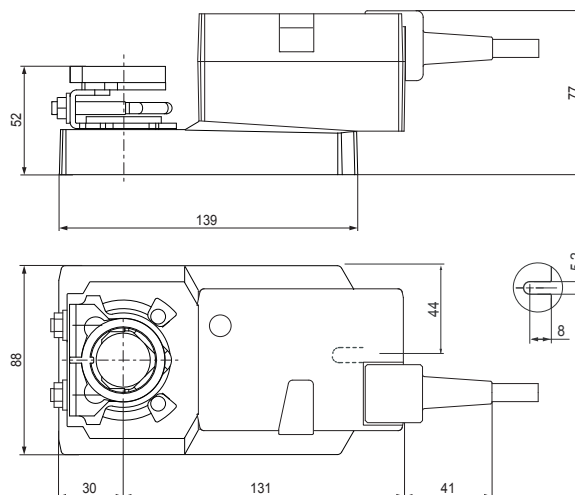
**Technical data**

<b>Electrical data</b>	Nominal voltage	AC 24V 50/60Hz, DC 24V	
	Nominal voltage range	AC 19.2...28.8V / DC 21.6...28.8V	
	Power consumption	13W @ nominal torque / 1.5W @ holding	
	For transformer sizing	23VA (Imax. 20A @ 5ms)	
	Connecting cable	Cable 1m, 3x0.75mm <sup>2</sup>	
<b>Functional data</b>	Torque	8Nm @ nominal voltage	
	Direction of rotation	Reversible with switch 0 ↺ or 1 ↻	
	Manual override	Gearing latch disengaged by push button, self-resetting	
	Angle of rotation	Max. 95°, adjustable by mechanical stops	
	Running time	4s	
	Automatic adjustment of operating range to match the mechanical angle of rotation	Manual triggering of the adaption by pressing the «Adaption» button	
	Sound power level	Max. 52dB(A)	
	Position indicator	Mechanical, remote visible	
	Negative torque	⚠ ≤ 50% from nominal torque (with restrictions)	
	Protection class	III (safety extra-low voltage)	
<b>Working conditions</b>	Degree of protection	IP54	
	EMC	CE according to 2004/108/EC	
	Mode of operation	Type 1 (EN 60730-1)	
	Ambient temp.	-30...+40°C (without restrictions) ⚠ +40...+50°C (with restrictions)	
	Non-operation temp.	-40...+80°C	
	Humidity	5...95% RH, non-condensing	
	Maintenance	Maintenance-free	
	Dimensions / weight	Dimensions (LxWxH)	See "Dimensions"
	Weight	0.97kg	

**Dimensions [mm]**

Damper spindle	Length	● I	■ I	◆ I
	≥42	8...26.7	≥8	≤26.7
*	≥20	8...20	≥8	≤20

\* Option (accessory K-SA)



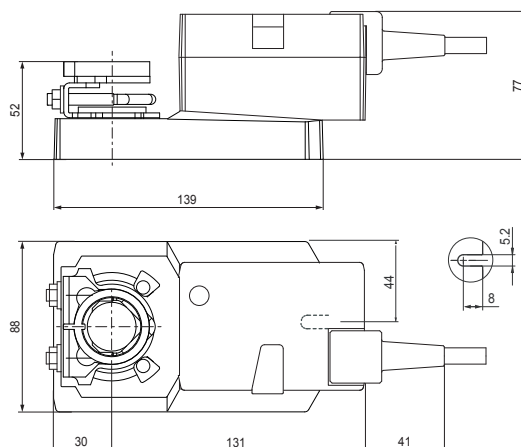
- For operation of air control dampers in HVAC system
- Torque: 8Nm
- Nominal voltage: AC/DC 24V
- Control signal: DC (0)2...10V
- Position feedback: DC 2...10V



**Technical data**

<b>Electrical data</b>	Nominal voltage	AC 24V 50/60Hz, DC 24V	
	Nominal voltage range	AC 19.2...28.8V / DC 21.6...28.8V	
	Power consumption	13W @ nominal torque / 1.5W @ holding	
	For transformer sizing	23VA (Imax. 20A @ 5ms)	
	Connecting cable	Cable 1m, 4x0.75mm <sup>2</sup>	
	<b>Functional data</b>	Torque	8Nm @ nominal voltage
		Control signal Y	DC (0)2...10V @ input impedance 100kΩ
		Position feedback signal U	DC 2...10V @ max. 0.5mA
		Position accuracy	±5%
		Direction of rotation	Reversible with switch 0 or 1
Direction of motion at Y=0V		At switch position 0 ↺ resp. 1 ↻	
Manual override		Gearing latch disengaged by push button, self-resetting	
Angle of rotation		Max. 95°, adjustable by mechanical stops	
Running time		4s	
Automatic adjustment of operating range and measuring signal U to match the mechanical angle of rotation		Manual triggering of the adaption by pressing the «Adaption» button	
<b>Working conditions</b>	Sound power level	Max. 52dB(A)	
	Position indicator	Mechanical, remote visible	
	Negative torque	⚠ ≤ 50% from nominal torque (with restrictions)	
	Protection class	III (safety extra-low voltage)	
	Degree of protection	IP54	
	EMC	CE according to 2004/108/EC	
	Mode of operation	Type 1 (EN 60730-1)	
	Ambient temp.	-30...+40°C (without restrictions) ⚠ +40...+50°C (with restrictions)	
	Non-operation temp.	-40...+80°C	
	Humidity	5...95% RH, non-condensing	
<b>Dimensions / weight</b>	Maintenance	Maintenance-free	
	Dimensions (LxWxH)	See "Dimensions"	
	Weight	0.95kg	

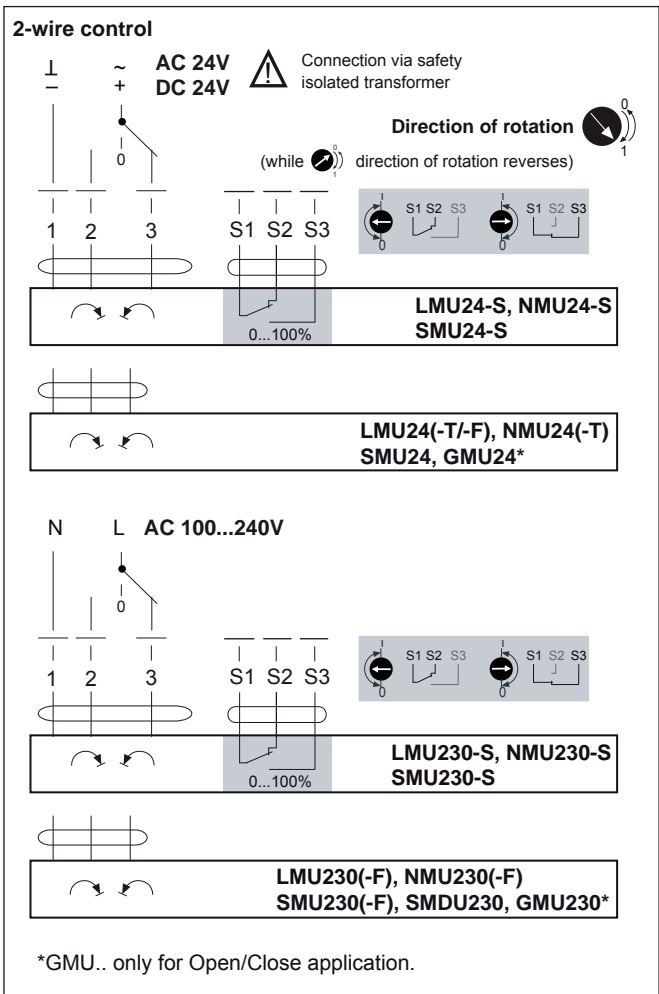
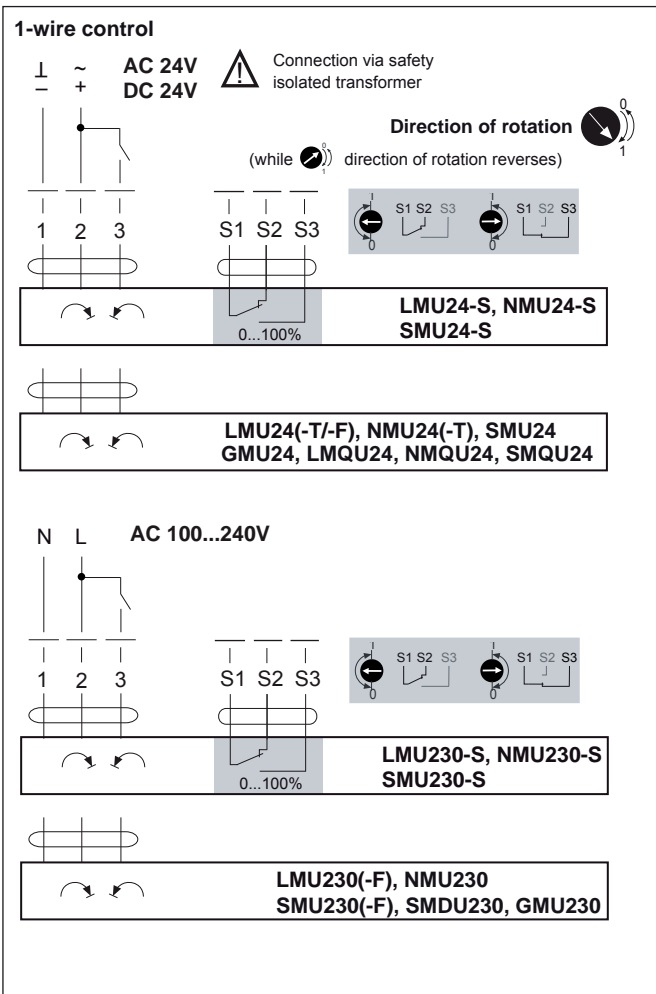
**Dimensions [mm]**



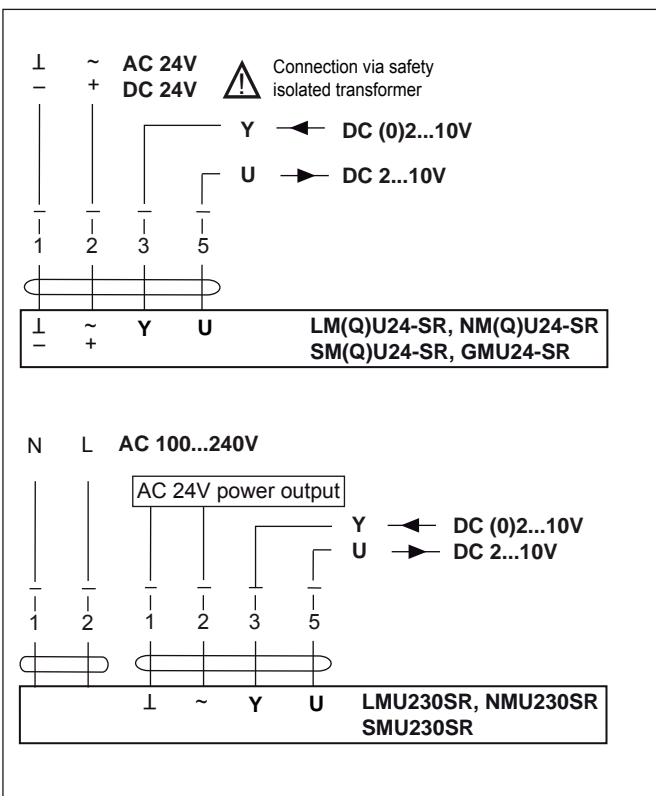
Damper spindle	Length	● I	■ I	◆ I
	≥42	8...26.7	≥8	≤26.7
	≥20	8...20	≥8	≤20

\* Option (accessory K-SA)

Wiring diagrams: Open/Close actuators—parallel connection possible, please note the performance data.



Wiring diagram: Modulating actuators—parallel connection possible, please note the performance data.



Position - signal voltage

